

RAD Map System

RADIATION MAPPING SYSTEM

Capabilities

- PDA datalogger displays and records each radiological measurement and associated X, Y, Z coordinates accurate to +/- two inches.
- The RadMap system yields MARSSIM oriented data.
- Survey data provides proof that characterization and post-remediation survey requirements have been met.
- RadMap eliminates the need for field gridding of survey area, manual recording of data and tedious data entry.
- When used with dual-channel meter and detector allows for the simultaneous recording of both alpha and beta count rates.
- RadMap data collected in .csv format can be imported into GIS, CAD, Surfer or RadPlot Excel add-in to create 2-D or 3-D radiation survey maps. Data can also be overlaid onto digital pictures.
- Improve data quality while reducing cost



Environmental Restoration Group, Inc.
8809 Washington St. NE, Suite 150
Albuquerque, NM 87113

Tel: 505-298-4224

Fax: 505-797-1404

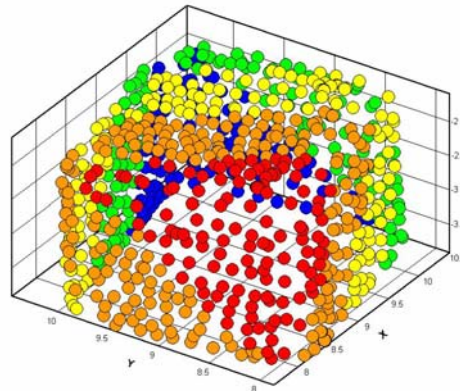
Web: <http://www.ERGoffice.com>

RadMap makes locating radiation measurements faster and easier than ever before.



TDS Recon PDA, and Receiver with Electronics box (attached to Ludlum 2360 and detector)

Simply place the transmitters in the area being surveyed, attach the lightweight receiver to the probe and connect the PDA to the survey meter. The probe location is constantly updated by measuring the 'time of flight' of ultrasound pulses from the transmitters to the receiver.



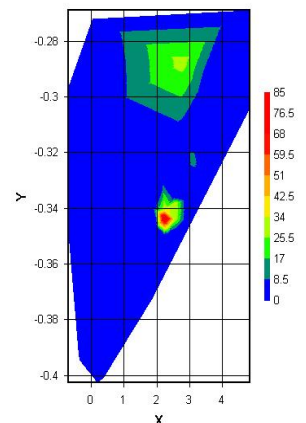
RadPlot 3-D Scatter Plot

System is complete with all the hardware and software needed to turn standard Ludlum radiation detectors into precise 3-D radiological mapping units. Setup and operation are quick, easy and do not require the user to learn complicated new hardware or software.



Transmitters (3) used for both 2-D and 3-D mapping

The PDA displays the output from the meter and associated position of the probe. Transfer the survey data to a PC by USB connection. Included with the system, the RadPlot Excel add-in mapping software makes it easy for field personnel to view data.



RadPlot 2-D Contour Plot

Portable System

Included in system:

- Transmitters (3)
- Ultrasound Receiver (1)
- Ruggedized PDA with Rad-Survey Application
- Transmitter Stanchions
- RadPlot Mapping add-in
- Pelican Shipping Case

Meters & detectors available*

**System comes ready to interface with meters with RS-232 output. Contact ERG for any special requests.*

The RadMap System is available for rent or sale. Please contact us with any questions.